

# Summer of Senior Outreach

---

San Francisco Food Assistance Service Center



# Overview



## •SF population 815,358 (12th largest US City)

39,070 NACF Clients, 4,509 60+

**60+ % of Total Population**

San Francisco	17.6%
California	14%
USA	16.5%

**On SSI (not eligible for CalFresh)**

San Francisco	45,913
California	1.2 million



# Current SF Profile



## Baby Boomers have arrived!!

- 60 – 64 = 2,393 on CalFresh (9/2011)
- 65+ = 2,226 on CalFresh (9/2011)

The Senior population on CalFresh in SF has increased **94 %** over the past five years.

This trend is likely to continue.



# Senior Eligibility



- If there is a Senior in the household, household members are only required to meet **net income limits**.
- Seniors who can't buy or prepare food on their own, live with others and still want to be a "separate household," the income of non-senior household members must be below 165% of the FPL.
- Assets or resources are not counted.
- Seniors can deduct from income, unreimbursed medical expenses over \$35 a month.
- If there is a Senior in the household, there is no cap on excess shelter costs.

# Real People, Real Examples



- Outer Richmond US citizen, Mariya (63) applied for CalFresh in our office. She earns \$583 monthly, pays rent of \$275 and gets \$20 for telephone utility expense. Mariya is granted \$90 per month in CalFresh benefits, with access to Restaurant Meals.
- Mission resident, Judy (70) lives alone and pays a high rent of \$740. She gets \$1123 from SSA, doesn't report any medical expenses, and gets \$16/mo. in CalFresh benefits. Her allotment could be increased if she incurred and reported medical expenses like co-pays, prescription costs and transportation costs for medical visits.

# Summer of Senior Outreach



- Undergrad College Intern
- 12 Site Presentations with on-the-spot Benefits CalWIN application and screening assistance
- Presentations in ENG, SPN & CHI with translation assistance
- Brochure promoting Restaurant Meals Program

(RMP)



# Summer of Senior *Imreach*



- Partnership with IHSS. CalFresh mailers to approx. 3,000 IHSS clients **not** receiving SSI
- Trained IHSS EWs to process CalFresh application at IHSS/Medi-Cal recertification
- Updated all RMP coding for seniors in CalWIN
- Cold calls to seniors for non-chain & ethnic restaurant suggestions for RMP
- Reminder to CF workers to review budget and RMP coding, and discuss RMP



# Senior Caseload



Seniors Receiving CalFresh			
Dec-2010	Mar-2011	Jun-2011	Sep-2011
3,847	4,048	4,255	4,509

- Senior cases on the rise
- Baby Boomers Bell Curve
- Retention among seniors is high
  - Seniors between the ages of 60-97 on CalFresh
- Senior Immigration Flows
  - Most frequent CalFresh allotment is \$200/mo.



# Challenges



- SSI ineligibility
- SSI/SSP/SS client awareness
- Language Appropriate Outreach
- Senior Center involvement
- Access (physical/location)
- Restaurant Meals Program
  - Education
  - Language Appropriate Outreach
  - Case Coding (ongoing)
  - Restaurant Outreach



# Are you on SSI?



**You may be confused about whether you are already on SSI.  
This may help you figure it out.**

**SSI: Supplemental Security Income** is a cash benefit for 65+ seniors, or the blind or disabled, who have less than \$2k in the bank. To be on SSI you CANNOT be on CalFresh, PAES or CalWORKs, but you are automatically eligible for Medi-Cal. SSI payments are approximately \$900 a month. You apply for SSDI at 90 7<sup>th</sup> Street, at Mission St.

**SSIP: Supplemental Security Income Pending:** A benefit funded by the City for people with pending SSI applications. SSI applications typically take 8+ months to process. SSIP allotments are the same amount as PAES benefits.

**SSDI: Social Security Disability Insurance** is disability insurance for unemployed people who paid into Social Security and are unable to work because of a disability. You are not eligible for SSDI until seven months after your disability began. The amount of your SSDI depends on how much you have paid into the system. You may be eligible for both SSDI and SSI, if the amount of your SSDI is lower than your SSI eligible. You apply for SSDI at 90 7<sup>th</sup> Street, at Mission St.

**Social Security Benefits** (SSA Retirement): If you have worked in your life, every time you get a paycheck you automatically pay a small amount into your social security account. After you are 62 or 65 (depending on your preference), the Social Security Administration starts to send you monthly checks from your account. If your income is less than the SSI amount, you can apply for SSI in addition to retirement benefits.

**SDI: State Disability Insurance** is a benefit available to employed Californian's who take a temporary leave from their job due to a health disability. The monthly benefit amount is up to 2/3 of your monthly salary. Applications require information from your doctor, and must be submitted through EDD (Employment Development Department). (If you have worked in CA, every time you get a paycheck you automatically pay a small amount into SDI).

# Are you on SSI?



## How to Apply for SSI

Apply the Federal Building (90 7th St—at Mission St) or on-line <http://www.socialsecurity.gov/applyonline/>. Applications require original birth certificate or original immigration papers.

## What can a CBO do to help a client apply for SSI?

1. Assist in online or paper applications and make sure they have supporting docs.
2. Encourage client to complete the Authorized Representative form part of the SSI application. As an authorized representative, you will receive copies of all documents sent by SSI to your client.
3. Refer your client to an SSI Advocate agency. The three SSI advocacy agencies are:

### **Positive Resource Center**

785 Market, 10<sup>th</sup> floor, (btw 3<sup>rd</sup> and 4<sup>th</sup>) ▪ SF, CA 94103 ▪ (415) 777-0333  
[andy@positiveresource.org](mailto:andy@positiveresource.org) [vaughn@positiveresource.org](mailto:vaughn@positiveresource.org)

### **Homeless Advocacy Project**

1360 Mission, Suite 201 ( btw 9<sup>th</sup> and 10<sup>th</sup>) ▪ SF CA 94103 ▪ (415) 575-3130  
[kdanielson@sfbar.org](mailto:kdanielson@sfbar.org)

### **Disability Evaluation Consultation Unit (DECU)**

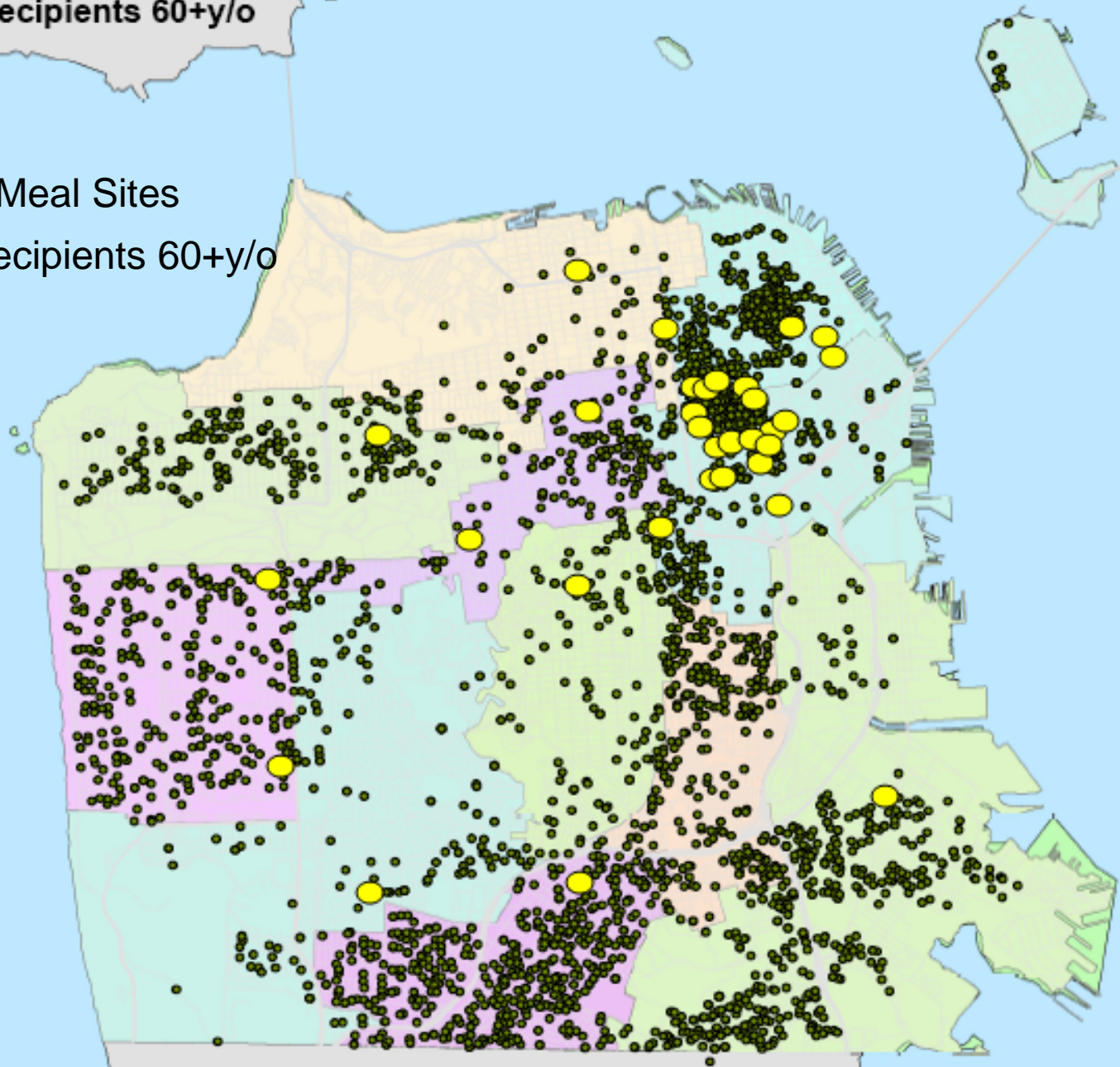
1235 Mission St (btw 8<sup>th</sup> & 9<sup>th</sup>) ▪ SF, CA 94103 ▪ (415) 558-4340  
[Kevin.heaney@sfgov.org](mailto:Kevin.heaney@sfgov.org)

*Note: Clients must be on County Adult Assistance Program (CAAP) to receive assistance from (DECU).*

**San Francisco**  
**Food Stamp Recipients 60+y/o**  
N=3,925

**LEGEND**

- Restaurant Meal Sites
- CalFresh Recipients 60+y/o





# QUESTIONS?



$$20 = (v) \sin(35) = \frac{1}{v} + .5(-1.8) \frac{1}{v} + 2$$
$$v^2 = (\sin(35) - .5(-1.8)) \frac{1}{20}$$
$$(159)^2 = \frac{1}{20}$$