



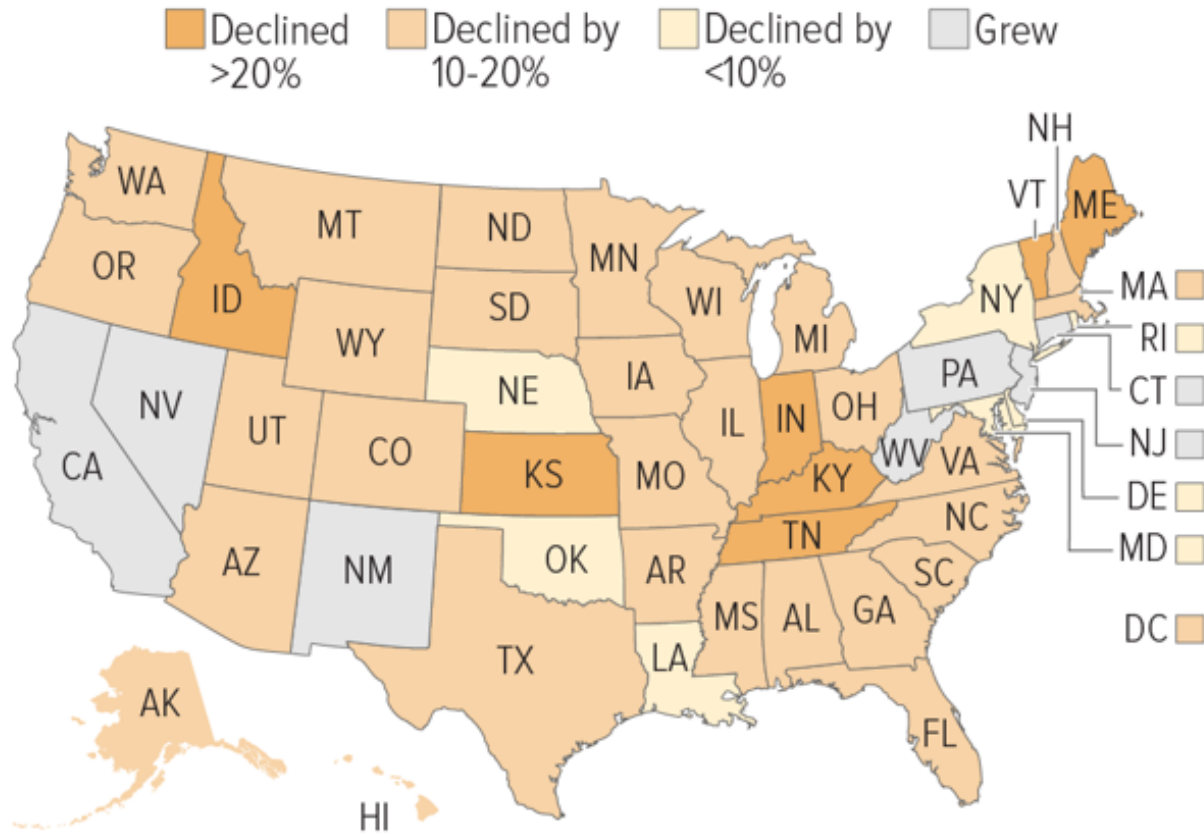
Imagine a World Where Nothing is  
Happening in DC. . .





# SNAP is Efficient and Effective

Percentage change in SNAP participants as share of population between April 2013 and April 2016



## SNAP Caseloads are Falling in Most States

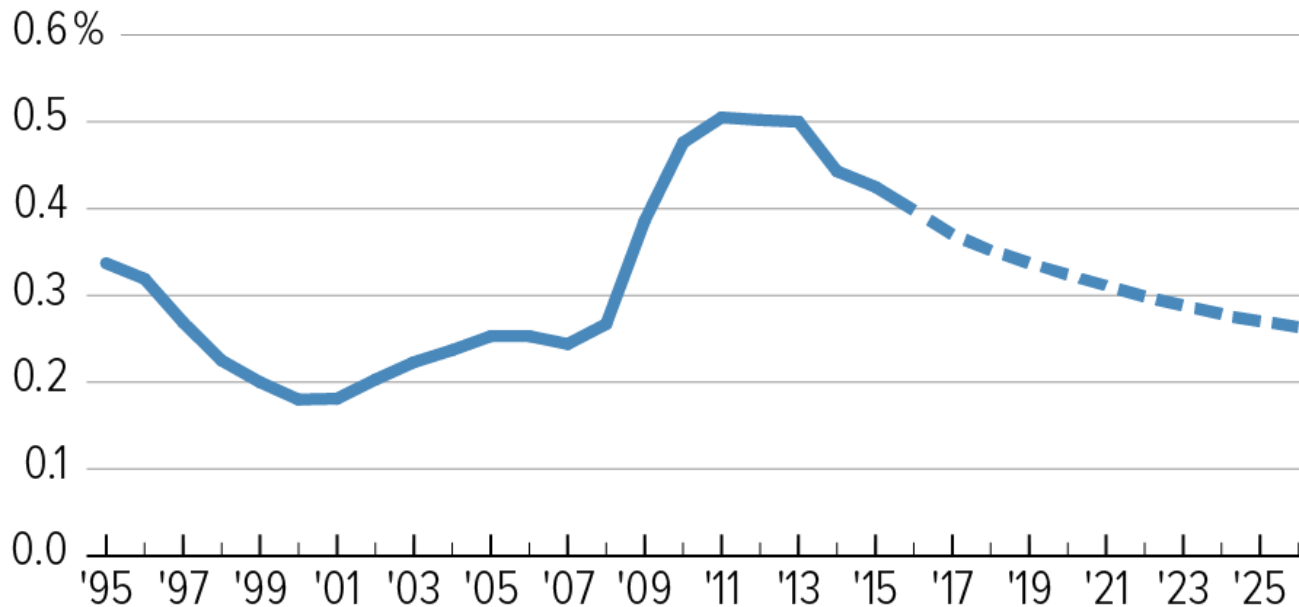
Source: CBPP calculations from USDA program data and Census Bureau population estimates



# SNAP responds to the economy

## SNAP Costs Falling, Projected to Fall Further

Spending as a share of gross domestic product

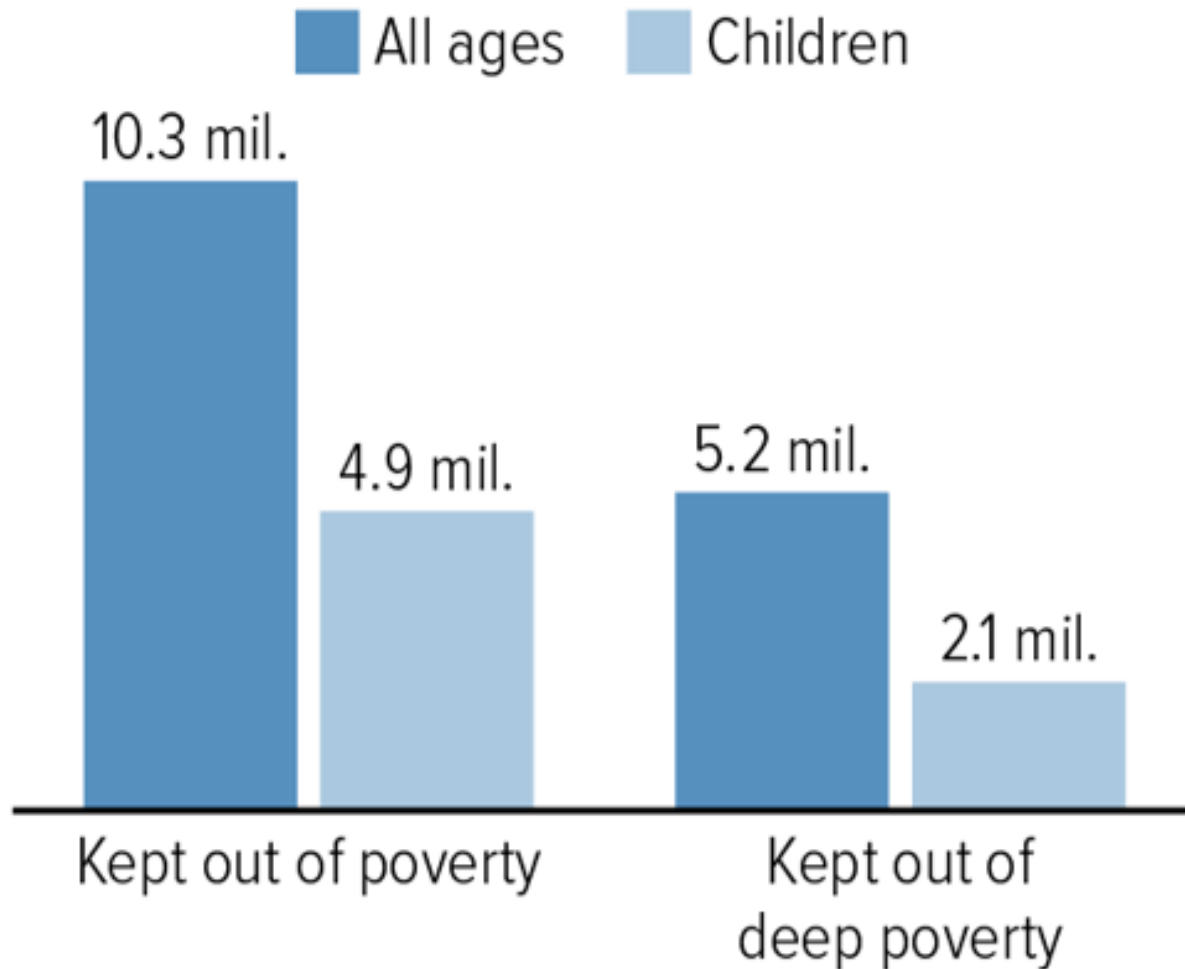


Note: dotted line indicates CBO projection.

Sources: Department of Treasury, Office of Management and Budget, Bureau of Economic Analysis, and Congressional Budget Office August 2016 baseline



# SNAP Fights Poverty

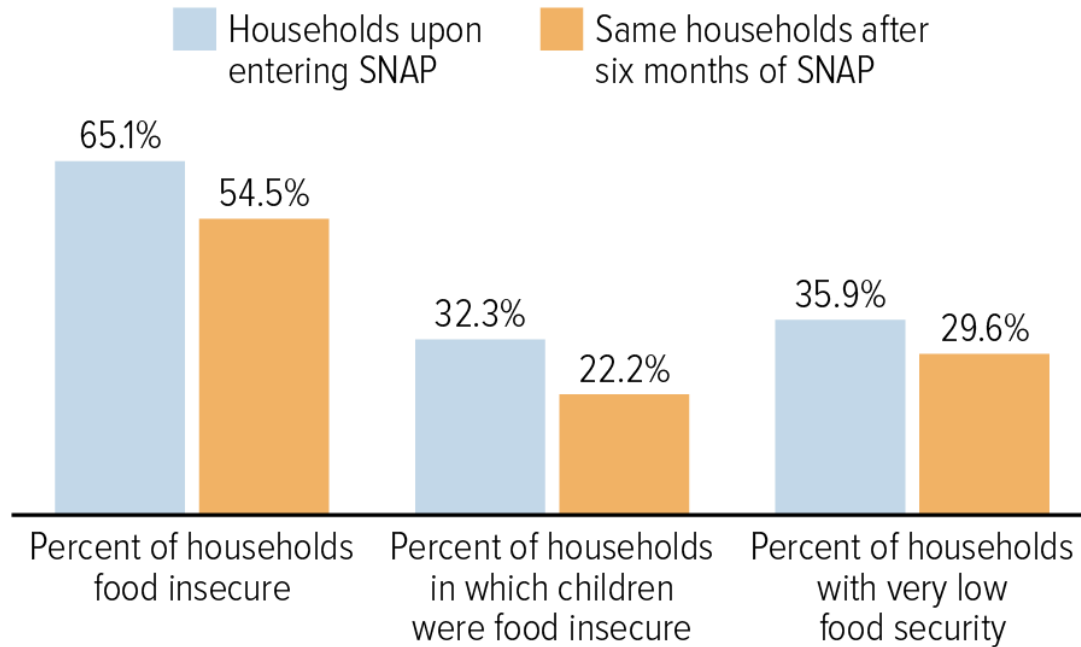


SNAP kept millions out of poverty and deep poverty – half the poverty level – in 2012



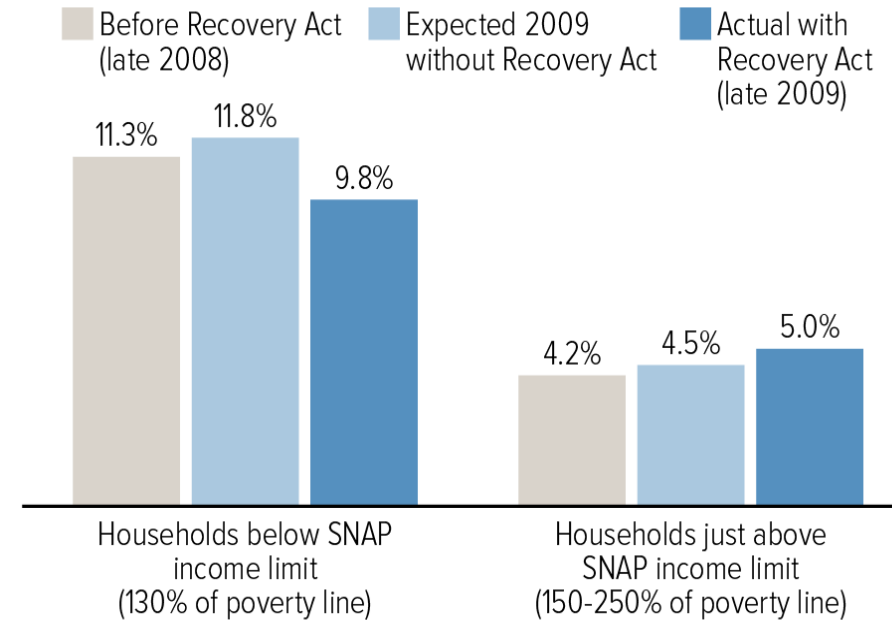
# SNAP Puts Food on the Tables of Low-income Households

## SNAP Helps Families Afford Adequate Food



## Very Low Food Security Declined for Low-income Households After Temporary SNAP Benefit Increase

Percent of households with very low food security



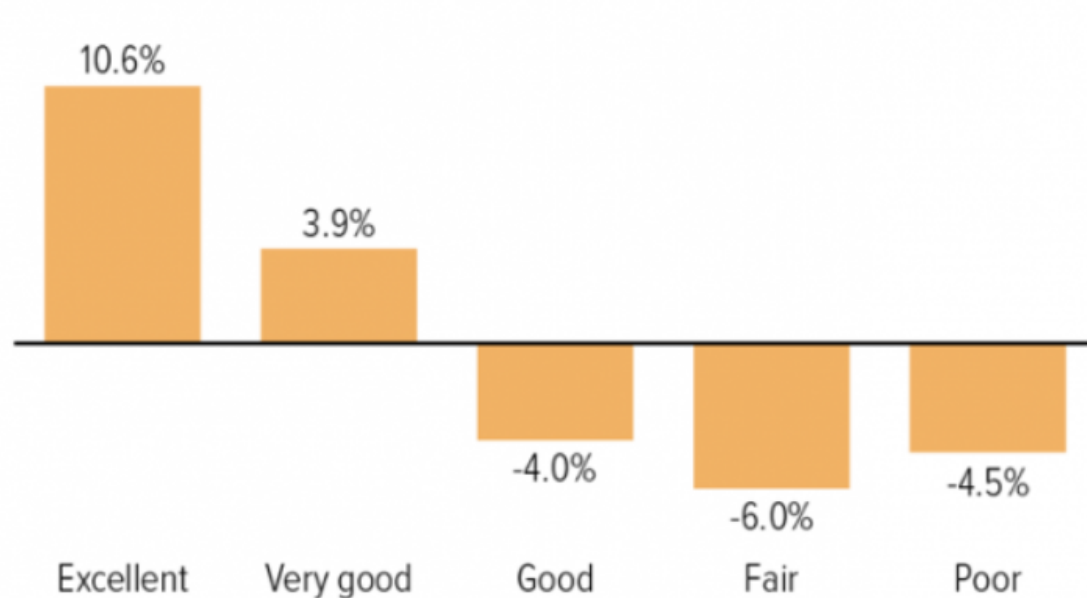
Source: Economic Research Service, "Food Security of SNAP Recipients Improved Following the 2009 Stimulus Package," April 2011.



# SNAP Improves Health and Reduces Health Care Costs

## SNAP Participants Report Better Health Than Eligible Non-Participants

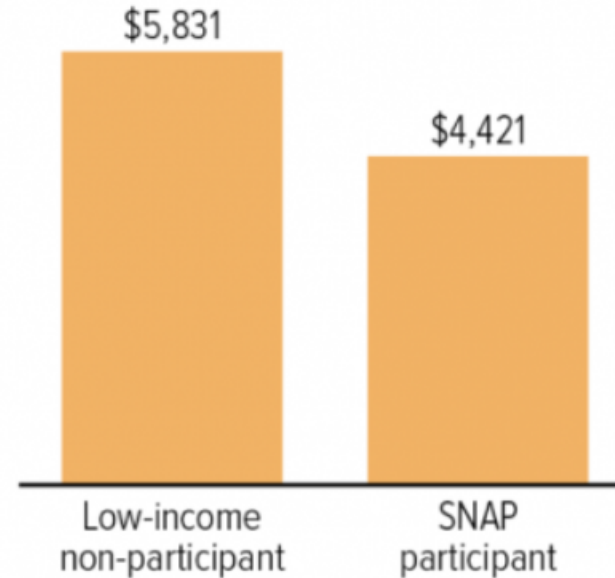
Percent more or less likely to describe health as:



Source: Christian A. Gregory and Partha Deb, "Does SNAP Improve Your Health?" Food Policy, 2015. Adjusted for differences in demographic, socioeconomic and other characteristics. Sample includes adults aged 20 to 64 in households with income at or below 130% of the federal poverty level.

## A SNAP Participant Incurs \$1,400 Less for Health Care

Estimated annual per-person health care spending



Note: Health care spending includes out-of-pocket expenses and costs paid by private and public insurance, including Medicare and Medicaid.

Source: Seth Berkowitz, Hilary K., Seligman, and Sanjay Basu, "Impact of Food Insecurity and SNAP Participation on Healthcare Utilization and Expenditures," University of Kentucky Center for Poverty Research, 2017.



# Back to Reality.





# Federal: What to Expect when You Are Expecting Bad News

- Block Grant Set Below Current Funding? No
- Increased Work Requirements? No (not yet!)
- Eligibility Cuts? No (not yet!)
- Increased Stigma? Unfortunately, yes



## SNAP Cuts in the President's 2019 Budget

| Proposal  | Ten-Year Federal Savings from SNAP Cuts |
|---|---|
| Cut SNAP benefits and shift a portion to food boxes   | -\$131.7 billion                        |
| State administrative costs for distributing food boxes  | \$2.5 billion                           |
| Restrict categorical eligibility  | -\$30.6 billion                         |
| Limit time-limit waivers  | -\$17.8 billion                         |
| Apply time limit through age 62, and change "elderly" definition to begin at age 63               | -\$5.9 billion                          |
| Eliminate "15% exemptions" from time limit  | -\$3.2 billion                          |
| Eliminate minimum benefit   | -\$2.7 billion                          |
| Cap large households' benefit   | -\$1.7 billion                          |
| Eliminate Low Income Home Energy Assistance Program (LIHEAP)/Terminate the SNAP-LIHEAP Connection | -\$13.1 billion                         |
| Impose standardized utility allowances across states  | -\$10.2 billion                         |
| Cap state administrative expenses   | -\$9.8 billion                          |
| Eliminate SNAP nutrition education  | -\$4.7 billion                          |
| Mandate the National Accuracy Clearinghouse   | -\$1.1 billion                          |
| Eliminate state performance bonuses   | -\$480 million                          |
| Interactions/effect of other budget proposals on SNAP*  | about \$17 billion                      |
| <b>Total</b>  | <b>-\$213.5 billion</b>                 |

# The Administration's Priorities: Cuts and Work



# The Farm Bill Priorities: Cuts and Work

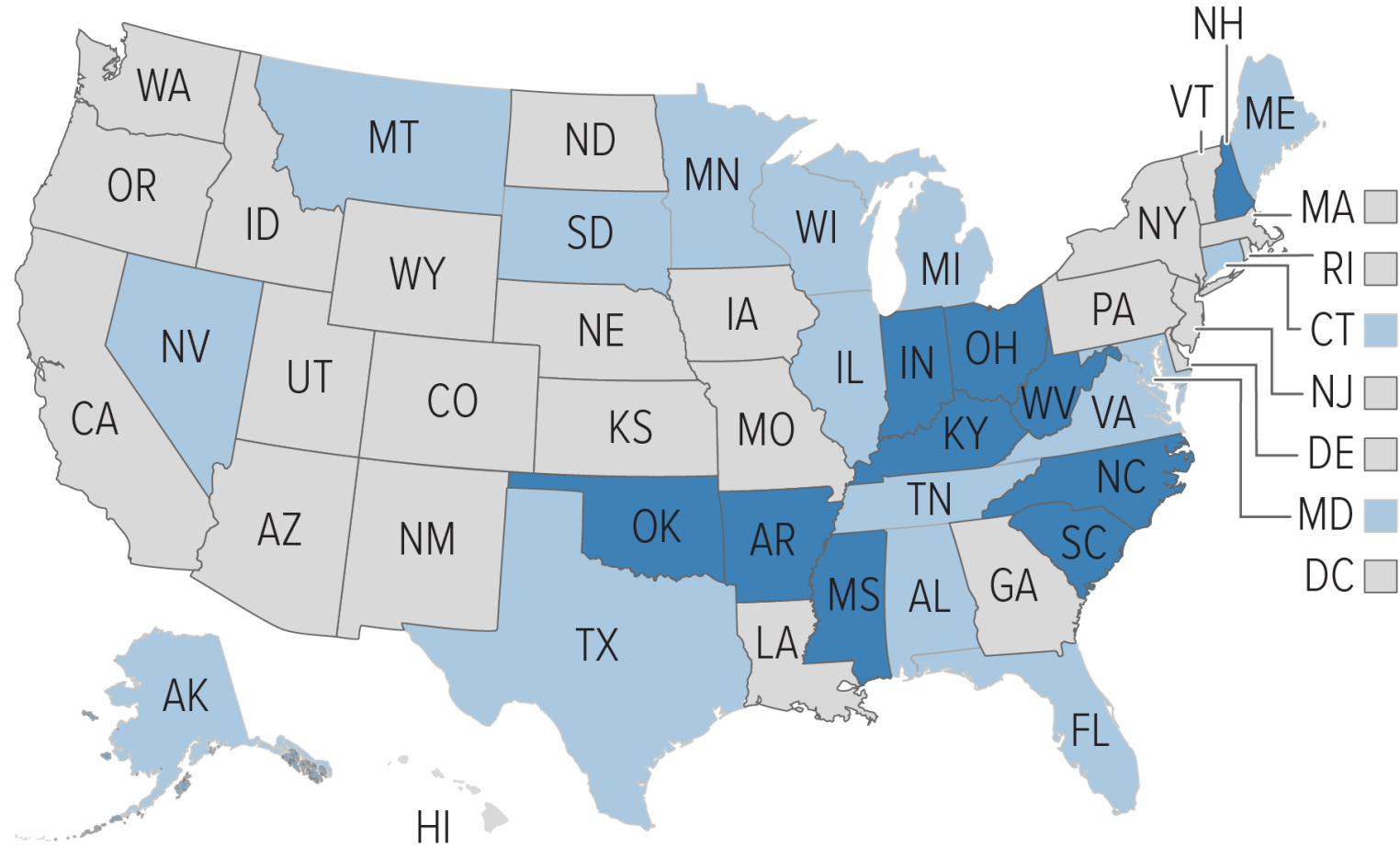
## Threats to SNAP

- Significant cuts
- Increased work “engagement”
- Eligibility restrictions

- 1 **Hearings and listening sessions** in Washington, D.C., and across the country for members of Congress to hear from the public
- 2 **The House Agriculture Committee** drafts and passes a bill. The bill is considered by the full House, which debates the bill, considers amendments, and votes.
- 3 **The Senate Agriculture Committee** also drafts and passes a bill, which is considered and voted on by the full Senate.
- 4 **A conference committee** allows the House and Senate to come together on a compromise.
- 5 **Final bill passed** by House and Senate.
- 6 **Signed into law (or vetoed) by the President.**



# 2017 State Priorities: Cuts and Work



Introduced most/all HOPE Act (10)
  Introduced some HOPE Act (16)
  None (25)



# State Proposals to Weaken SNAP

- Prohibit state from providing food assistance to unemployed adults in areas without jobs  
(prohibit waiving ABAWD time limit)
- Cut off poor families who work more (end broad-based categorical eligibility)
- Push Families
- Require poor households to fill out unnecessary paperwork
- Increase state bureaucracy to process piles of paperwork (unnecessary verifications)



## Priority: Unemployed Childless Adults



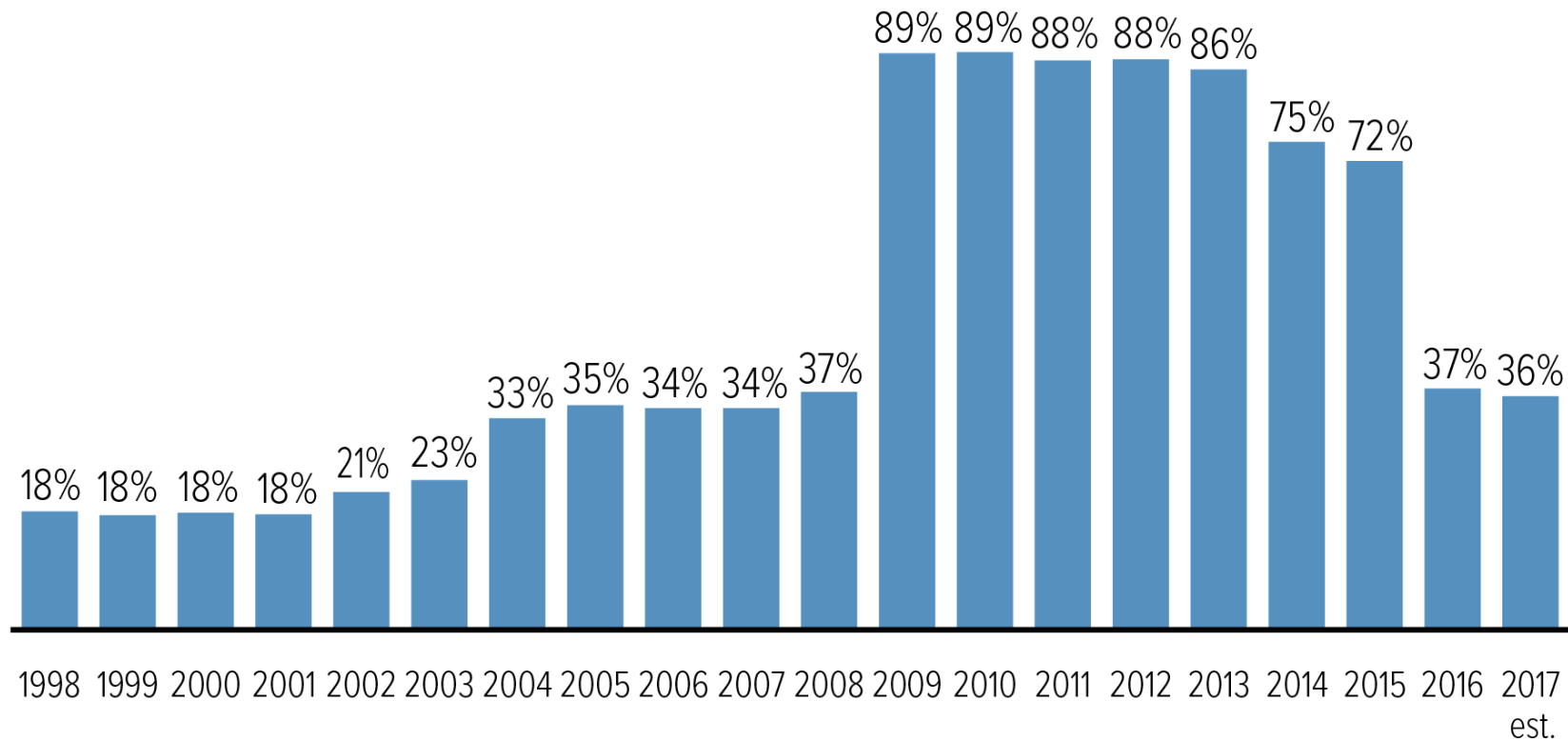
“I think that one major change you will probably definitely see in that Farm bill is to remove those waivers for able-bodied adults without dependents, and it’s become a lifestyle for some people . .

Our goal is to help people get a job and to be part of the economy.”

- Secretary of Agriculture Sonny Perdue



# Share of U.S. Waived from SNAP's 3-Month Time Limit



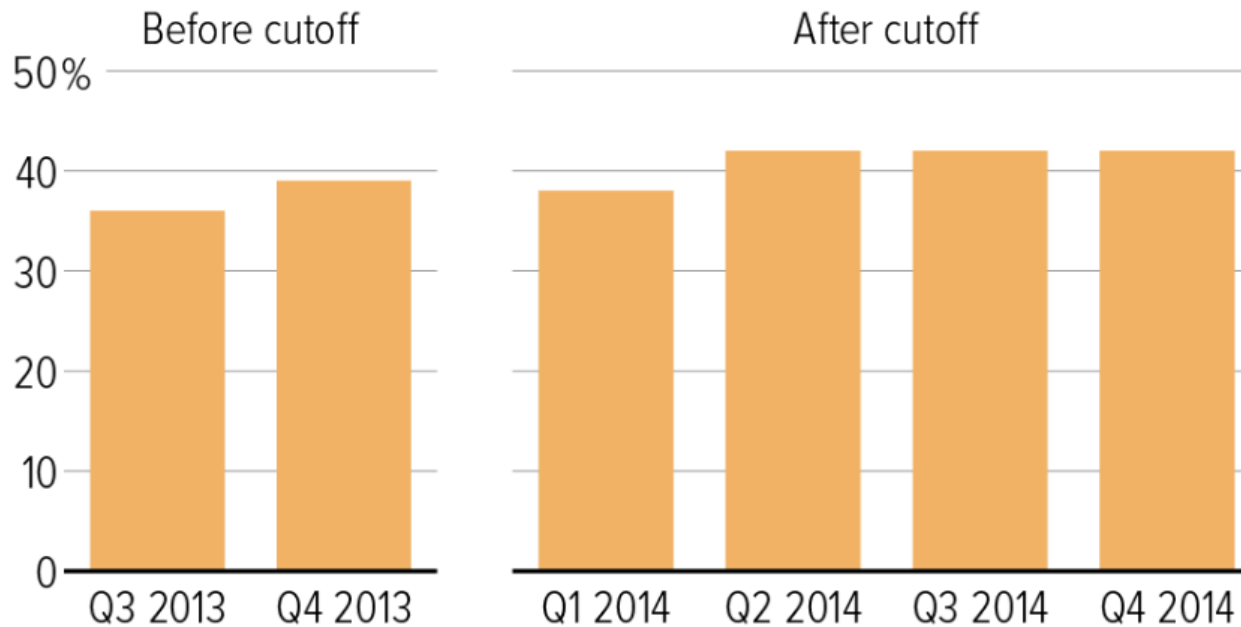
Note: Represents share of US population living in a waived area, i.e. county or city.



# SNAP Time Limit Does Not Lead to More Work

## Kansas Work Rates Nearly the Same Before and After Time Limit

Share of non-disabled childless adults cut off SNAP who earned wages in each quarter (Q) of a calendar year



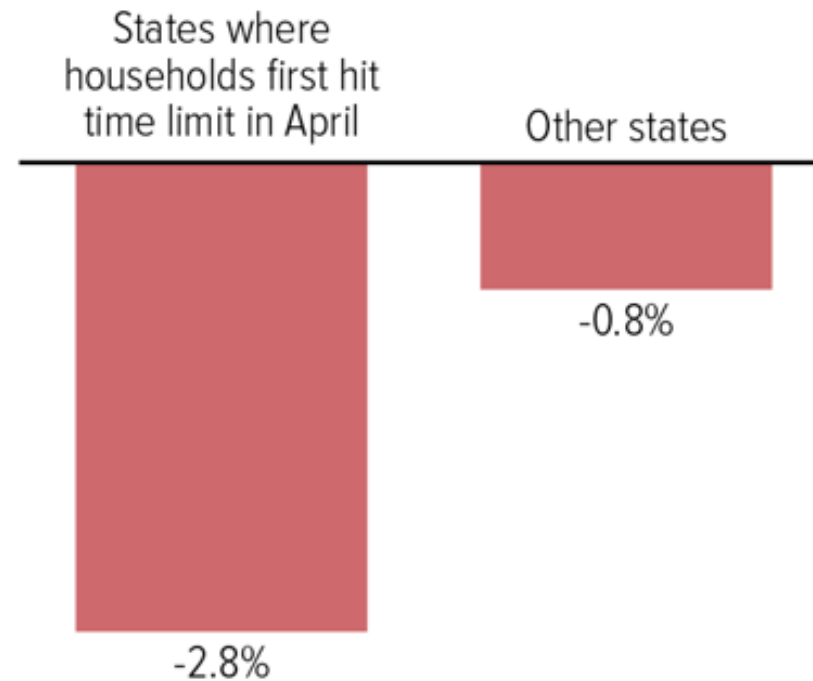




# But Does Lead to Caseload Decline

## Bigger SNAP Declines in States Newly Imposing Time Limits

Change in SNAP participants, March-April 2016



Note: Excludes Louisiana and Kentucky due to one-month anomalies.

Source: CBPP analysis of Agriculture Department data



# A Preview of Coming Disasters?

- Advanced notice is round one
- Message: the rule is harsh and unfair; making it harder for individuals or states is the wrong way to go
- Volume matters
- Templates are available
- Deadline: April 19

---

---

**DEPARTMENT OF AGRICULTURE**

**Food and Nutrition Service**

**7 CFR Part 273**

**RIN 0584-AE57**

**Supplemental Nutrition Assistance Program: Requirements and Services for Able-Bodied Adults Without Dependents; Advance Notice of Proposed Rulemaking**

**AGENCY:** Food and Nutrition Service (FNS), USDA.

**ACTION:** Advanced notice of proposed rulemaking.

---



# Priority: SNAP participants and work



"We want to remove barriers to work and make it easier to get a job, while making sure public assistance is available for those who truly need it"

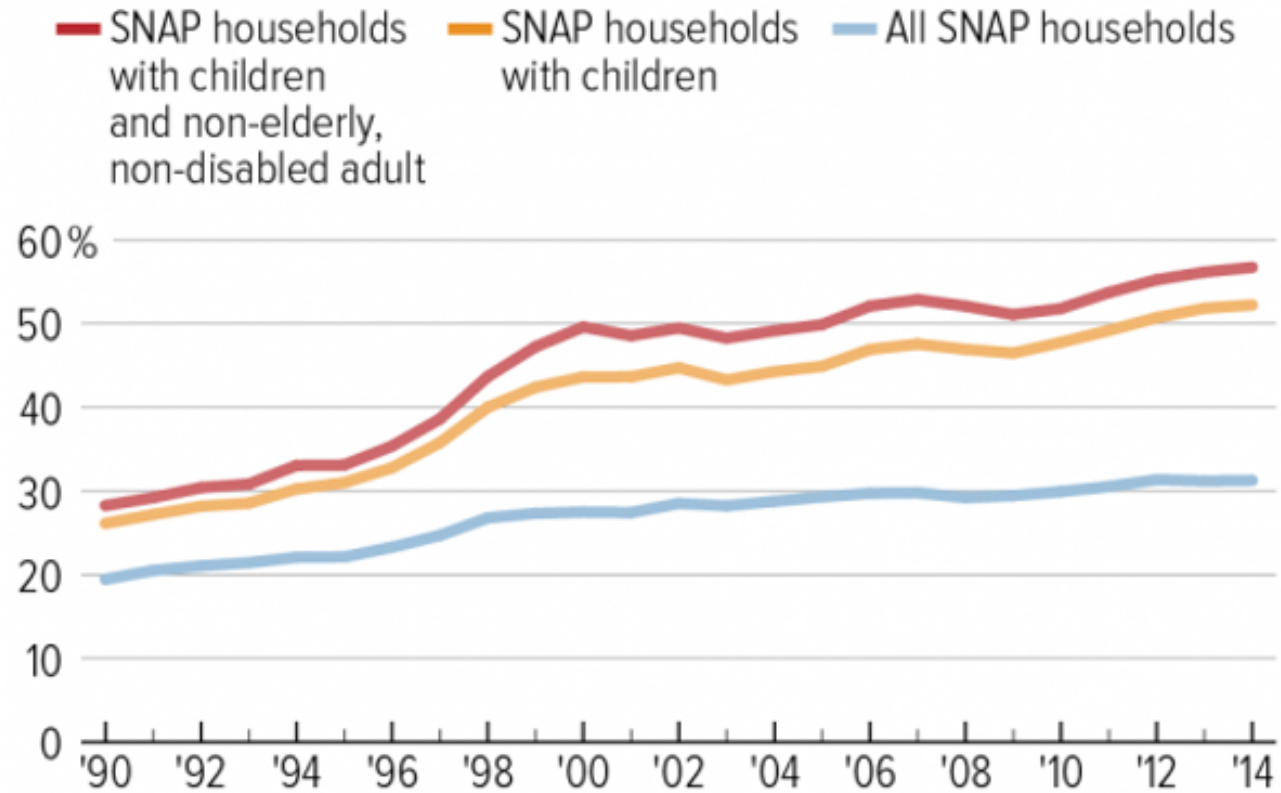
Gov. Scott Walker

- Mandate E&T for almost all adults, including parents
- Mandate 30 hours of E&T for all.
- Require households to have few assets to qualify for benefits
- Require photos on EBT card
- Drug test E&T participants



# SNAP Supports Work

Share of households with earnings

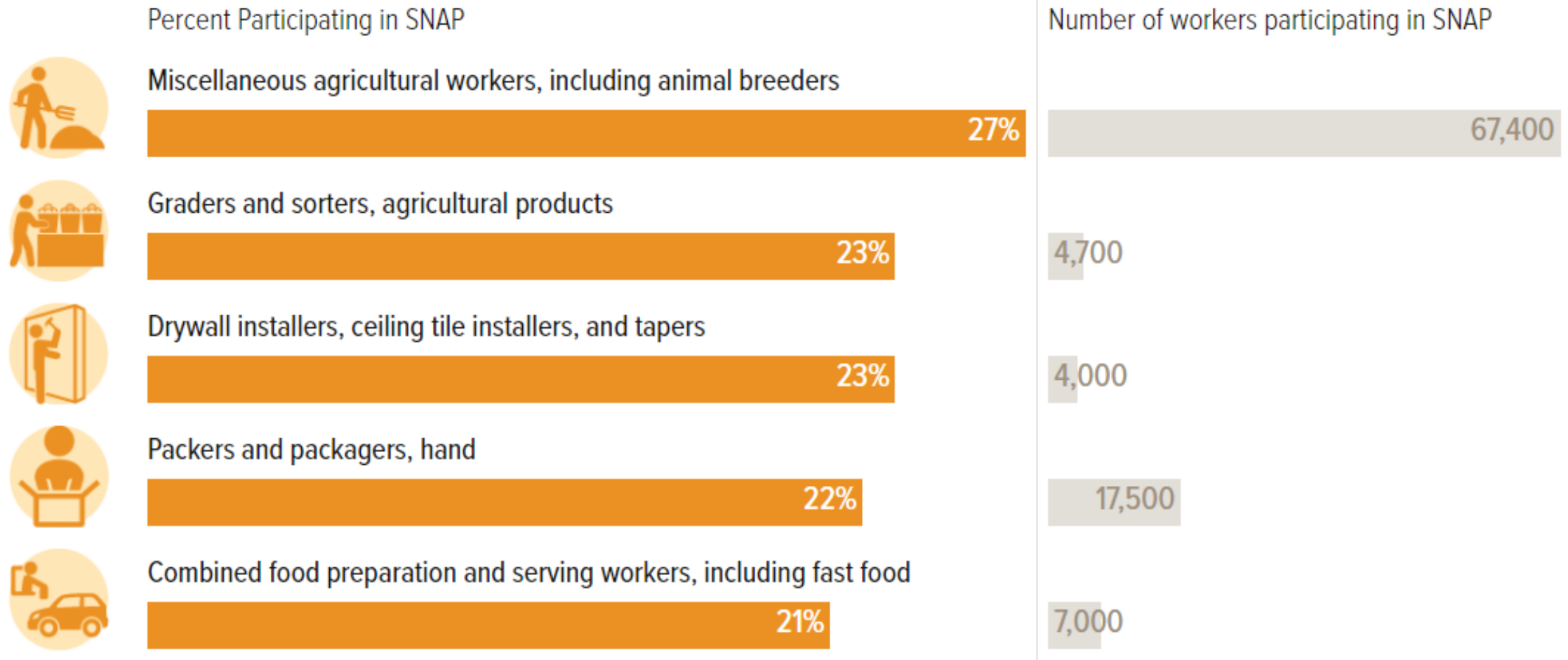


Source: CBPP tabulations of Agriculture Department household characteristics data

SNAP Work Rates Have Risen, Especially Among Households With Children and Adults Who Could Be Expected to Work



# Lots of Working Californians Use on SNAP





# Priority: The Truly Needy



Food stamp loopholes are rampant; here's how to fix them

By Kristina Rasmussen | March 07, 2018 01:43 PM

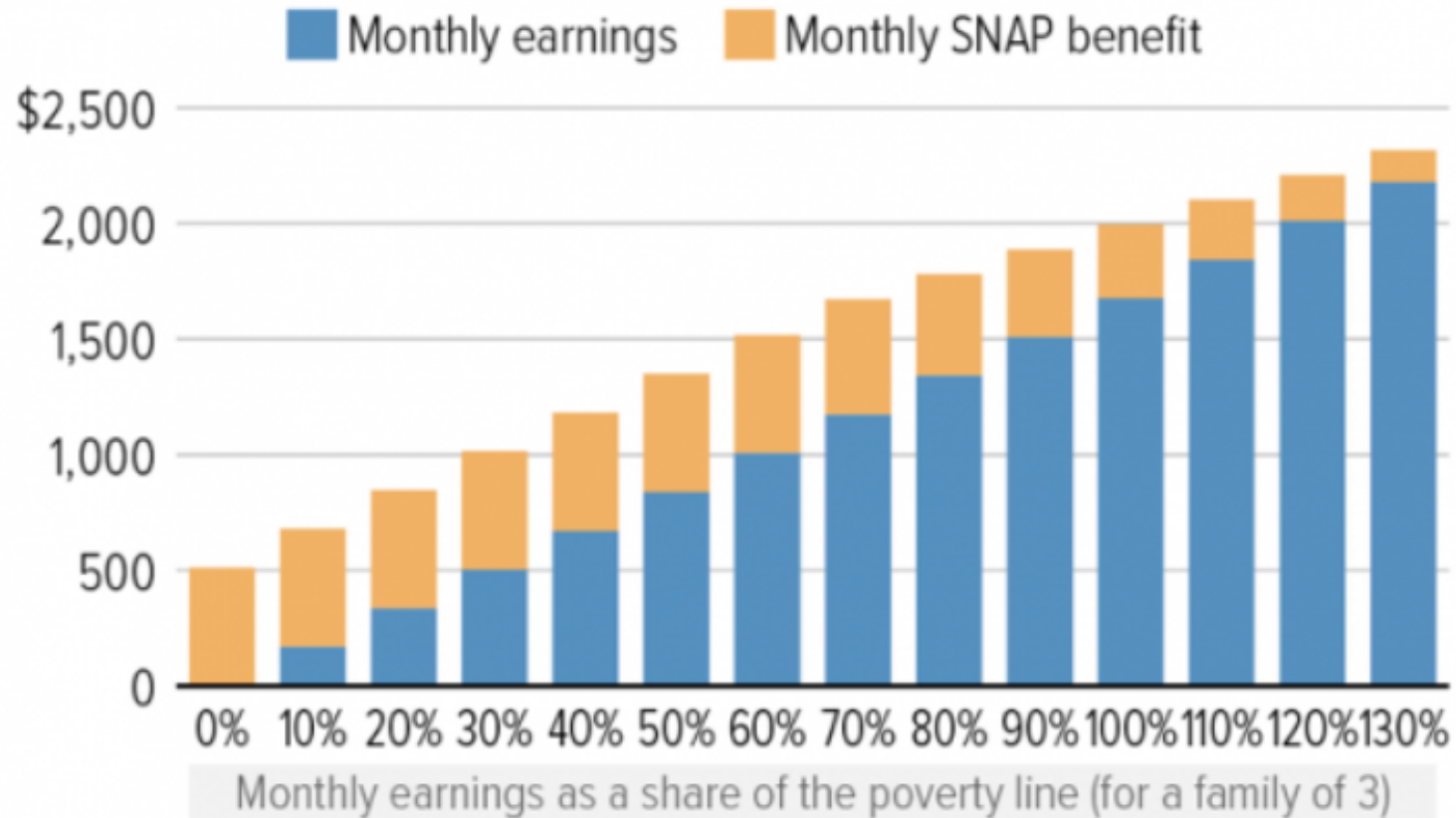
## **Food Stamp Millionaires**

One of the most egregious food stamp tricks is “Broad Based Categorical Eligibility,” created out of thin air by Clinton-era bureaucrats and aggressively pushed by Obama’s food stamp department, which [pleaded with states to expand eligibility](#).



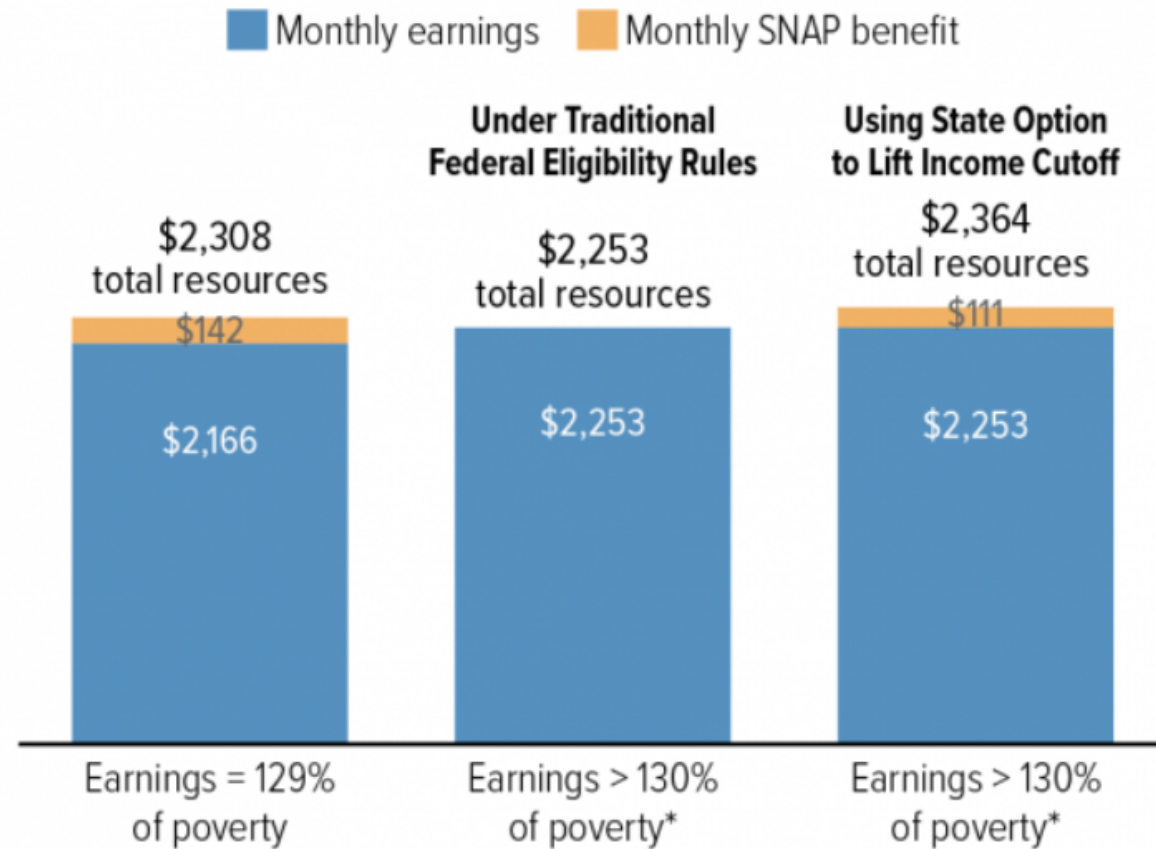
# Categorical Eligibility Supports Workers

## SNAP Benefits Gradually Phase Out as Earnings Rise





## Categorical Eligibility Smooths the Benefit Phase-Out and Encourages Work







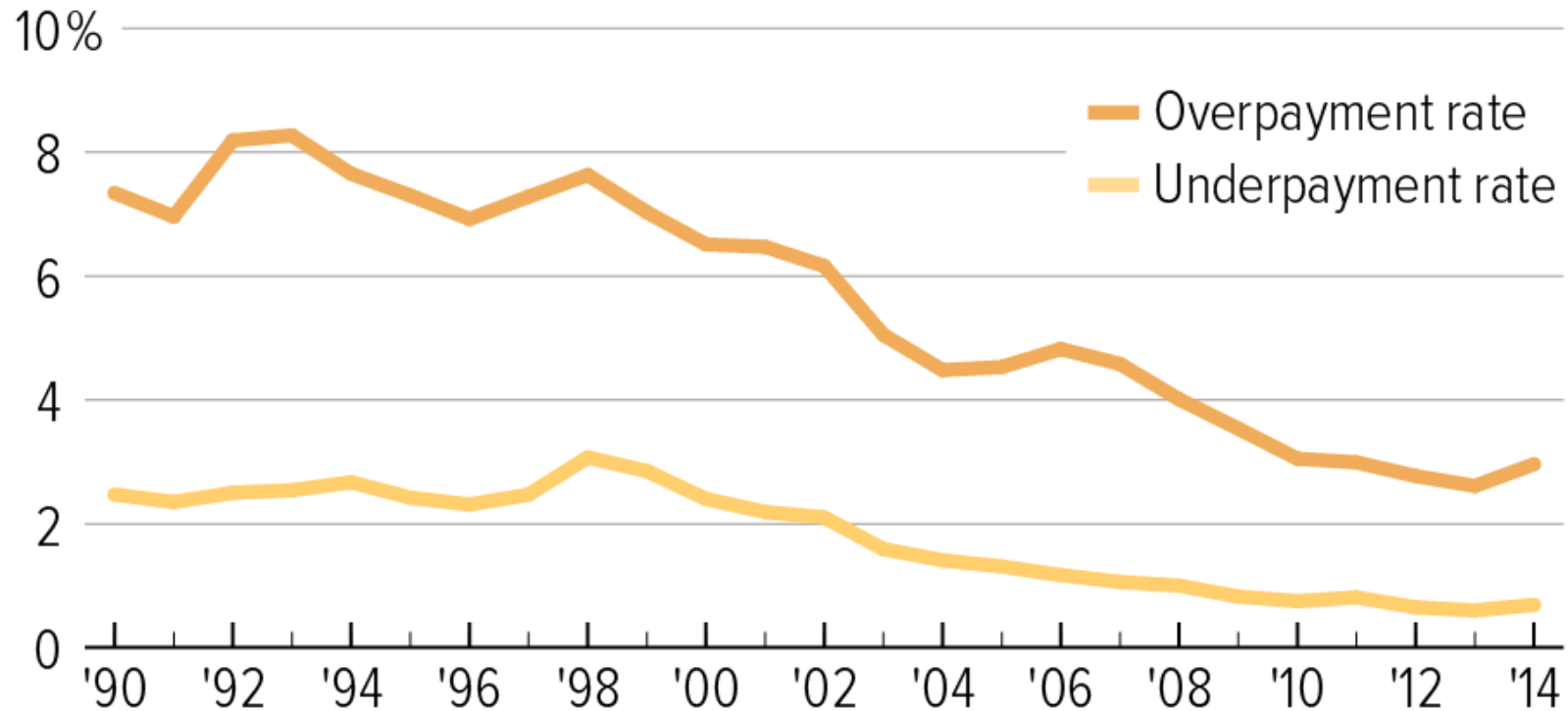
# Priority: Waste, Fraud and Abuse





## SNAP Error Rates Near Historic Lows

Fiscal years 1990-2014

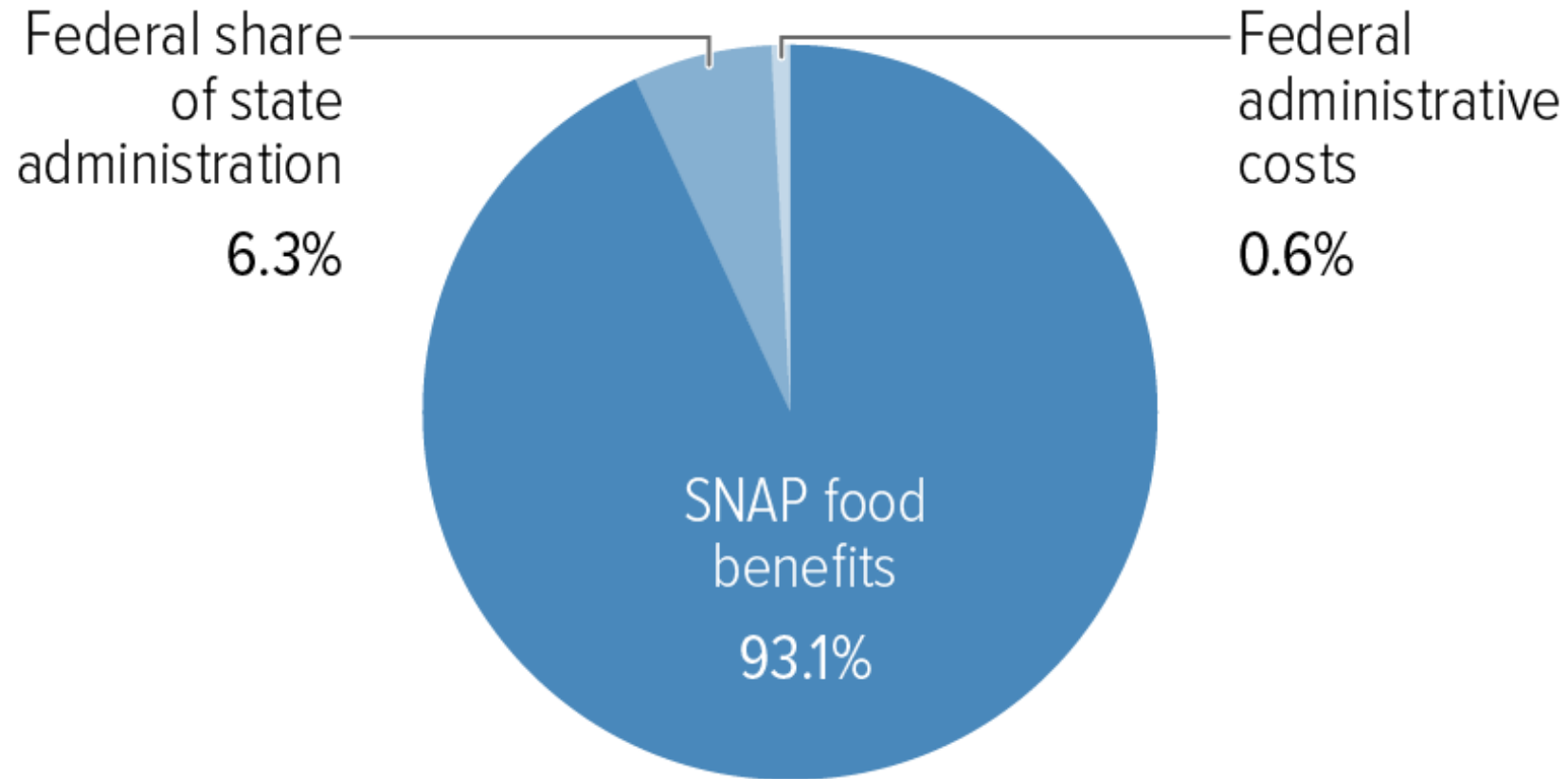


Source: Agriculture Department, Quality Control Branch



# You Can't Cut SNAP Without Hurting Eligible Families

## 93 Percent of Federal SNAP Spending Is for Food





# Questions?