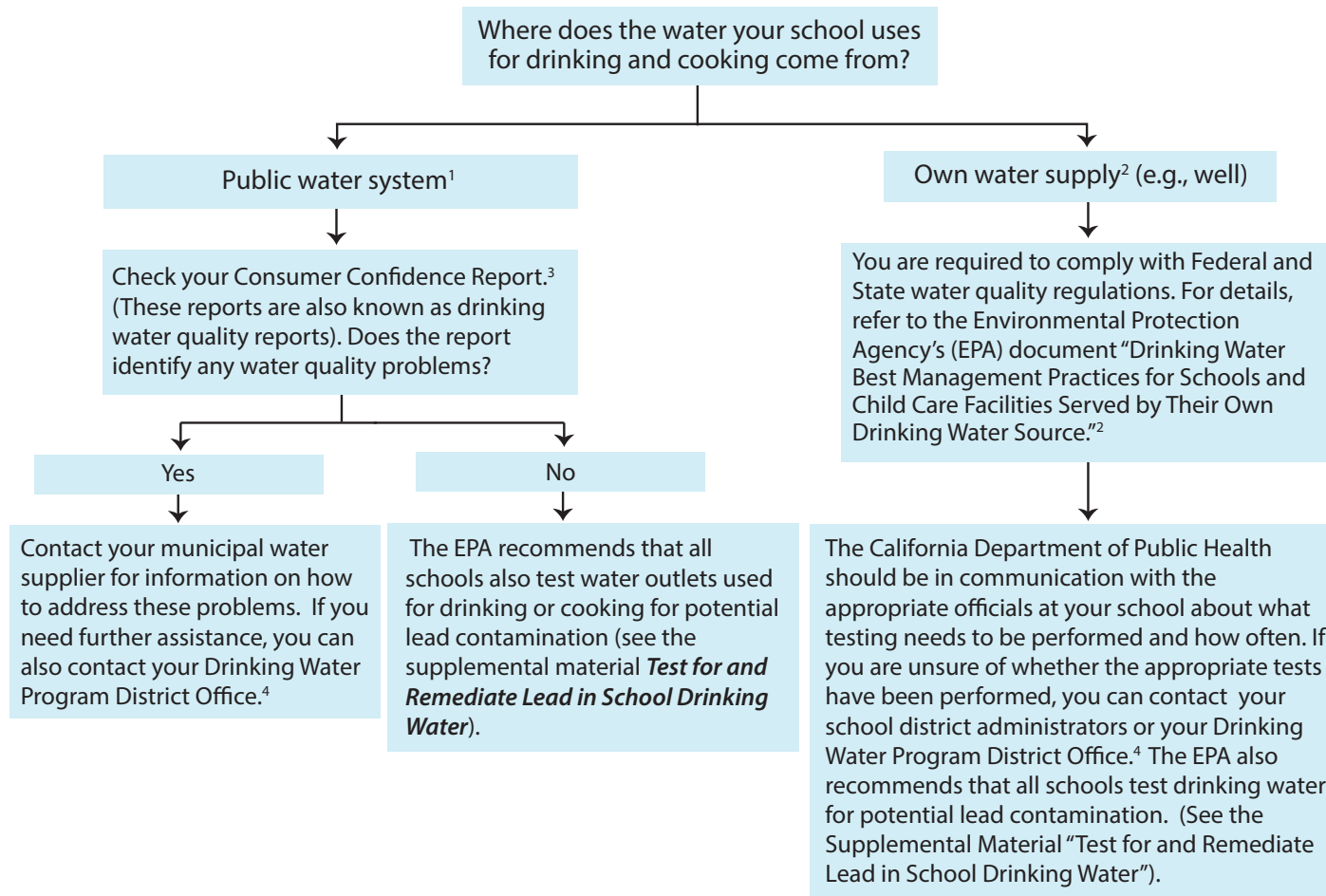


# ENSURE THE QUALITY OF DRINKING WATER IN SCHOOLS: INITIAL STEPS



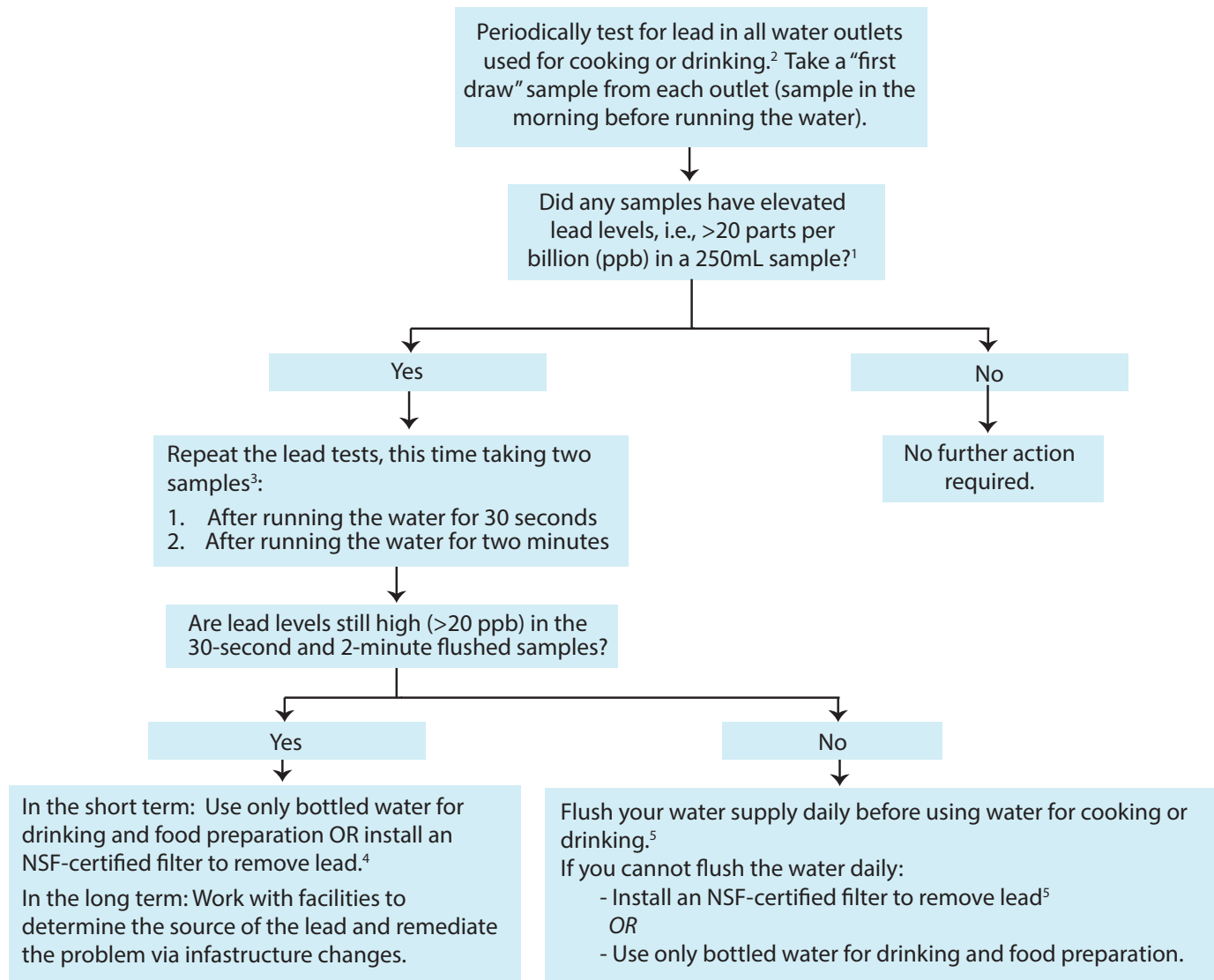
(1) See also: Environmental Protection Agency. Drinking Water Best Management Practices for Schools and Child Care Facilities Served by Municipal Water Systems. <http://water.epa.gov/infrastructure/drinkingwater/schools/upload/epa816b13002.pdf>

(2) See also: Environmental Protection Agency. Drinking Water Best Management Practices for Schools and Child Care Facilities Served by Their Own Drinking Water Source. <http://water.epa.gov/infrastructure/drinkingwater/schools/upload/epa816b13001.pdf>

(3) Each year by July 1st, you should receive by mail a Consumer Confidence Report (an annual water quality report) from your water supplier that tells you where your water comes from and what is in it. Many water systems also put their water quality reports online. Visit the EPA website (<http://water.epa.gov>) or your local public utility's or water company's website for more information.

(4) The Department of Public Health runs the Drinking Water Program District Offices for the State of California. Contact information for each district can be found at: <http://www.cdph.ca.gov/programs/Documents/DDWEM/OriginalDistrictMapCDPH.pdf>.

# TEST FOR AND REMEDIATE LEAD IN SCHOOL DRINKING WATER<sup>1</sup>



(1) For more information, see "3Ts for Reducing Lead in Drinking Water in Schools" by the Environmental Protection Agency (EPA): [http://www.epa.gov/ogwdw/schools/pdfs/lead/toolkit\\_leadschools\\_guide\\_3ts\\_leadschools.pdf](http://www.epa.gov/ogwdw/schools/pdfs/lead/toolkit_leadschools_guide_3ts_leadschools.pdf). See also: "Lead-Safe Schools Guide" developed by the Labor Occupational Health Program at the University of California, Berkeley: <http://www.iohpb.org/docs/pubs/lead/lssguide.pdf>

(2) Consult with your Drinking Water Program District Office (<http://www.cdph.ca.gov/programs/Documents/DDWEM/OriginalDistrictMapCDPH.pdf>) to determine how often you need to perform lead tests.

(3) For more information on potential sources of lead contamination, see "Drinking Water Best Management Practices for Schools and Childcare Facilities Served by Municipal Water Systems" from the EPA: <http://water.epa.gov/infrastructure/drinkingwater/schools/upload/epa816b13002.pdf>

(4) To search for NSF Certified drinking water treatment units and water filters, use the search tool here: <http://info.nsf.org/Certified/dwtu/>. For more information, visit the NSF website: <http://www.nsf.org/consumer-resources/health-and-safety-tips/water-quality-treatment-tips/>

(5) For detailed instructions on how to flush water outlets, see Exhibit 5.1 (pp. 56) in the "3Ts for Reducing Lead in Drinking Water in Schools" by the EPA: [http://www.epa.gov/ogwdw/schools/pdfs/lead/toolkit\\_leadschools\\_guide\\_3ts\\_leadschools.pdf](http://www.epa.gov/ogwdw/schools/pdfs/lead/toolkit_leadschools_guide_3ts_leadschools.pdf)